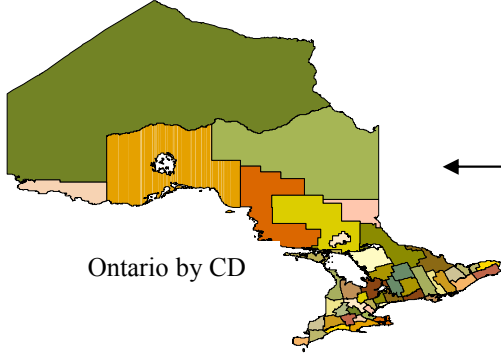
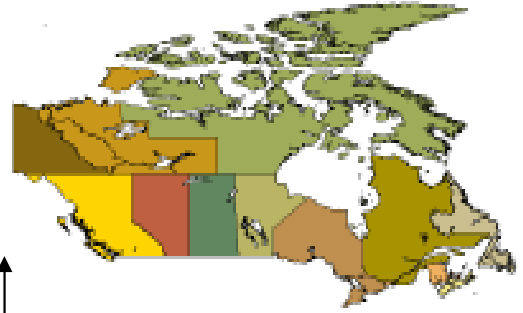


Generation5

Census Geographic Units of Canada

Provinces

- 10 Provinces are the primary governmental and legal divisions of Canada and the basic unit for which data are tabulated
- The 3 Territories are equivalent to the Provinces for statistical purposes



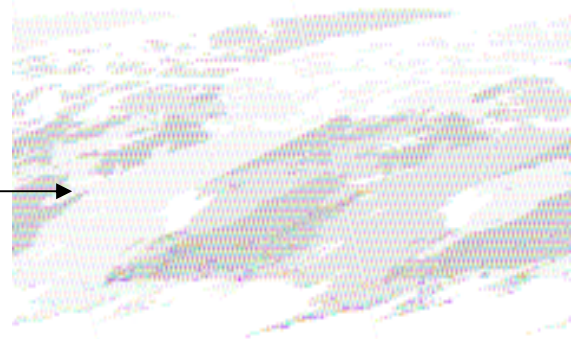
Ontario by CD

Census Divisions

- Intermediate areas between the Province and Census Subdivisions
- Established by provincial law
- Boundaries are very stable and remain unchanged for long periods of time
- CDs nest within, and never cross, Provincial boundaries
- There are 283 CDs in Canada
- In Newfoundland, Manitoba, Saskatchewan and Alberta, provincial law does not provide for this administrative area; Statistics Canada created CDs in cooperation with these Provinces

Census Metropolitan Areas and Census Agglomerations

- Urban areas together with the adjacent urban and rural areas with which it has a high degree of social and economic integration
- CMA and CA are composed of one or more contiguous CSDs
- Includes an urbanized core and surrounding area from which people commute to their place of work
- CMAs are not continuous across the landscape
- CMAs have 100,000+ people; there are 143 in Canada. CAs have between 10,000 and 100,000 people; there are 27 in Canada.



Ontario by CSD



Toronto by CT

Census Subdivisions

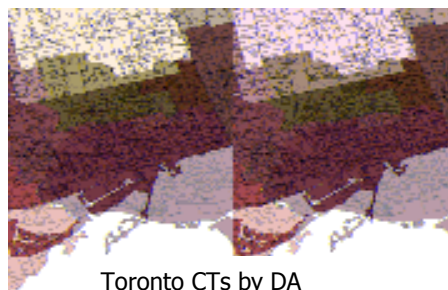
- Municipalities as determined by provincial legislation, such as a city, township, village or its equivalent
- CSDs nest within CDs; there are 5392 CSDs in Canada
- In NF, NS and BC other types of CSDs have been created by Statistics Canada in cooperation with these provinces as equivalents to municipalities
- Statistics Canada recognizes Native North American settlements as CSDs

Census Tracts

- Small, relatively stable geographic areas within CMAs and other large census agglomerations
- Established by Stats. Can. and local experts
- CT populations are 2,500-8,000, optimum size is 4,000
- A CT may be split when its population exceeds the range; therefore CTs do not necessarily follow current CSD or CD boundaries except at the external outline of a CMA although this is rare
- There are 5071 CTs in Canada

Dissemination Areas and Blocks

- Small, relatively stable geographic units composed of one or more blocks
- DAs are the smallest standard geographic area for which all census data are disseminated
- DAs cover the entire country
- DAs replaced the Enumeration Area as the smallest standard census geography in the 2001 census. EAs are still used to collect census information.
- In most cases DAs contain 400-700 people; however the boundaries of DAs outside larger urban centres (50,000+ people) are the same as boundaries for EAs; therefore some DAs may fall below the 400-700 person target
- DAs nest within CSDs and CTs
- There are 54,537 DAs in Canada
- There are 478,707 Blocks making up the DAs
- Approx 3.8MM Block-faces (often one side of a city street between intersections; equal to a postal code in that case) make up the Blocks



Toronto CTs by DA



Postal Codes - Overview

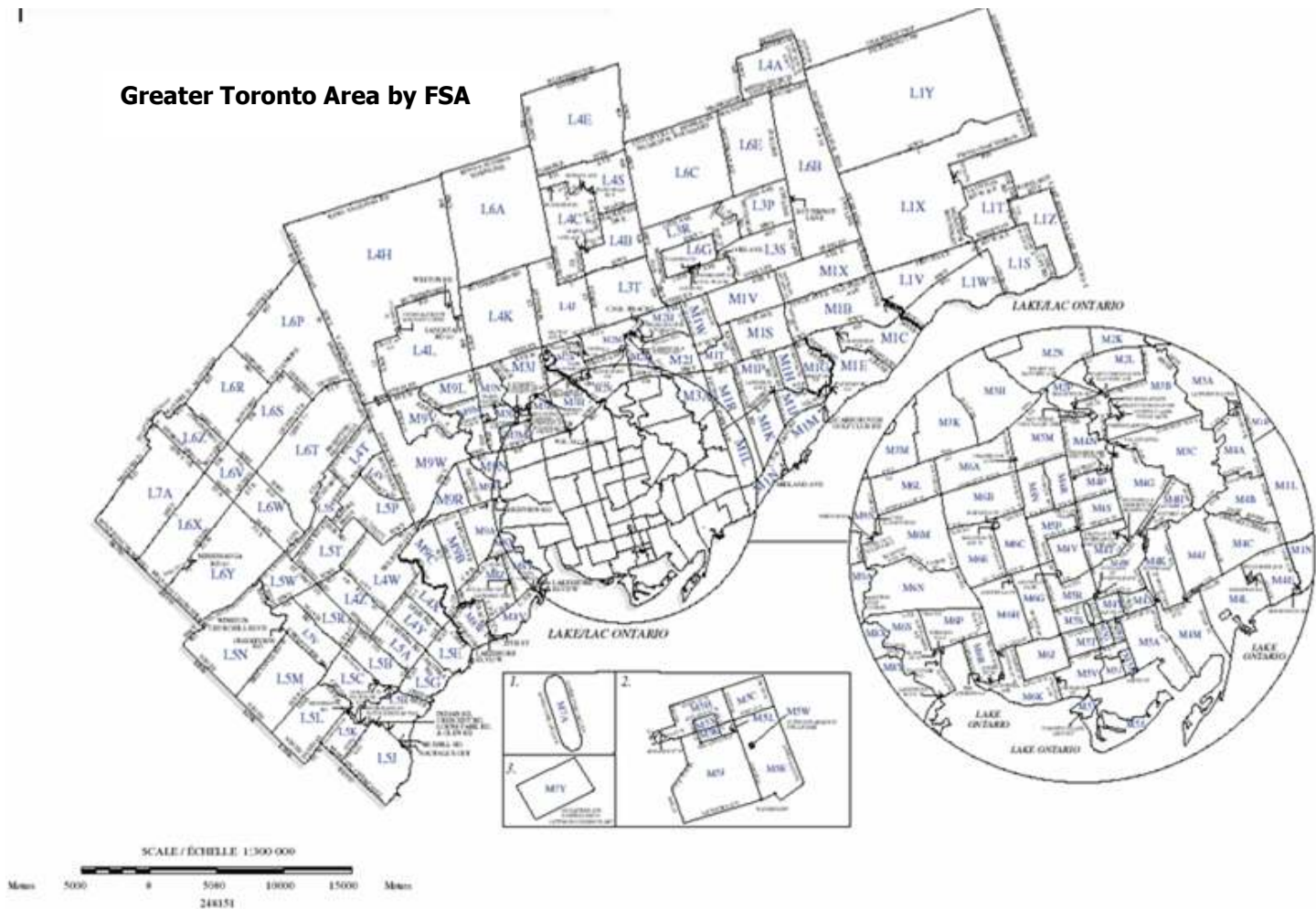
- All of Canada is divided into postal codes
- A postal code is a six digit alphanumeric code
- Postal codes are a Canada Post construct designed to facilitate the delivery of mail. They are not, strictly speaking, a census geographic area. However, beginning in the early 1980s, Statistics Canada established an ongoing program to create and maintain a concordance file that makes it possible to match postal code geography to the standard census geographic areas. Generation5 has refined this capability further.

Postal Codes – Allocation of the First Character

- Each province or major population region within a province has a unique letter assigned to it as the first digit in the postal code. These digits have been assigned in order from east to west for the ten provinces followed by the territories.
- Letters that could be mistaken for a number (D, I, O and Q) or another letter (F and U) are not used. W and Z are not required.
- Letter assignments: A – Newfoundland and Labrador, B – Nova Scotia, C – Prince Edward Island, E – New Brunswick, G – Quebec East, H – Metropolitan Montreal, J – Quebec West, K – Eastern Ontario, L – Central Ontario, M – Metropolitan Toronto, N – Southwestern Ontario, P – Northern Ontario, R – Manitoba, S – Saskatchewan, T – Alberta, V – British Columbia, X – Northwest Territories and Nunavut, Y – Yukon.

Generation5

Greater Toronto Area by FSA



Postal Codes – Forward Sortation Areas

- The first three characters of a postal code refer to the Forward Sortation Area (FSA)
- In urban areas a FSA is about the size of 4-6 Census Tracts (10,000-48,000 people)
- FSA examples: M5V is a mix of older houses, low-rise apartments and high-rise condos in Toronto between University Avenue and Strachan Avenue south of Queen Street West down to Lake Ontario; L6E is a much larger but lower population density suburban geography in Markham bounded by 16th Avenue, McCowan Road, the Markham-Stouffville municipal boundary, and 9th Line.
- There were 1,595 FSAs in Canada as of the 2001 Census. New FSAs are created as new areas are populated – there were 1,621 FSAs in Canada as of September 2005. The latest count, from 2007, shows 1,626 FSAs.

Postal Codes – Local Delivery Unit

- The last three characters of a postal code are the Local Delivery Unit (LDU)
- In urban areas a LDU is often equivalent to a census block-face (normally one side of a city street between two consecutive intersections) or a single building
- There are many LDUs in each FSA
- In areas with carrier delivery, groupings of LDUs form the carrier's delivery route, called a Postal Walk, which is larger than a census Dissemination Area but smaller than a Census Tract
- LDU examples: M5V 2Y6 is a 210-unit condo building in Toronto on the northwest corner of King Street West and Bathurst Street; L6E 1T9 is a relatively new postal code on the south side of a short street in a suburban development built in 2003.
- There were 758,658 LDU-level postal codes in Canada as of the 2001 Census. New LDUs are created as new areas are populated – there were 800,603 LDUs in Canada as of September 2005, and the most recent count (in 2007) is 807,774.
- There are typically 10-15 households in a LDU-level postal code